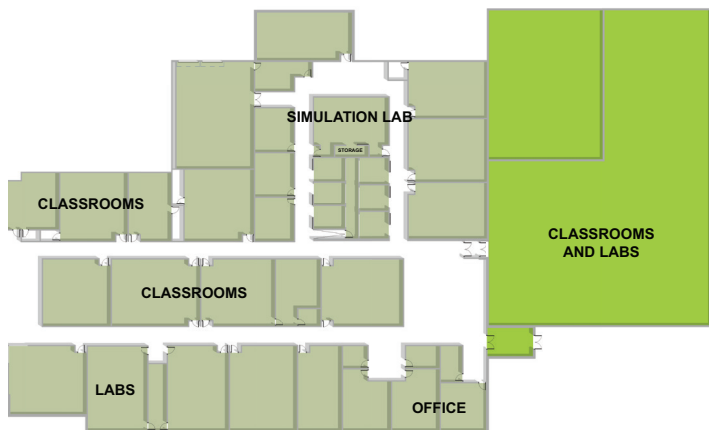


## PROPOSED ENHANCEMENT PROJECT

# HEALTH AND HUMAN SERVICES FACILITY

FOND DU LAC COUNTY

The enhancement of Moraine Park's Health and Human Services wing on the Fond du Lac Campus will add simulation spaces that model real-world clinics and labs, and update labs and classrooms for nursing, radiography, medical lab technician, surgical technology, emergency medical services (EMS) and respiratory therapy programs, as well as general science education courses.



## THE NEED

Careers in the health care field are one of the fastest growing in the region, with more than 8,000 job openings expected over the next 10 years.

The current health care instructional areas on the Fond du Lac Campus are aged and lack the technology and equipment now common in health care facilities. A common requirement found within programmatic accreditation is for separate program lab spaces. The simulation (SIM) lab is in a shared classroom space, always in high demand and allows for minimal flexibility for students. The updated SIM space can be utilized by students to better prepare students for off-site clinical, supplement clinical when necessary, and/or provide an opportunity for students to hone their skills in a safe training environment.

### STUDENT IMPACT

The proposed enhancement will bring:

- New simulation spaces that will allow 128 new nurses district-wide to finish their credentials at MPTC annually.
- More advanced simulation training throughout many health programs offered at the Fond du Lac campus, allowing students to be better prepared to begin employment immediately after graduation.



### COMMUNITY IMPACT



- 8,000 plus healthcare jobs are expected to open over the next 10 years. *Source: Quarterly Census of Employment and Wages*
- Expansion of the health and human services program facilities will position MPTC to better meet the current and future district workforce needs.



## PROJECT GOALS

- Update labs and classrooms for our nursing, nursing assistant, substance use disorder counseling, radiography, surgical technology, EMS/paramedic, respiratory therapy programs and general education science labs.
- Ensure the College meets programmatic accreditation requirements by having a separate lab space for each program.
- Allows flexibility for both the addition of new academic programs and for the expansion of existing programs.

## COSTS

Estimated project cost:

\$13.3 million\*

Total referendum cost:

\$55 million

*The projected tax impact of the \$55 million facilities enhancement plan is estimated to be \$21 per year per \$100,000 of property value (\$1.75 per month) for the next 20 years.*

Other projects include:

- Advanced Manufacturing and Trades - Fond du Lac County | \$13.7 million
- Manufacturing, Automation and Robotics Lab - Washington County | \$18.5 million
- Fire Training Facility (location TBD) | \$9.3 million



SCAN TO LEARN MORE!

Moraine Park Technical College is an equal opportunity and affirmative action College. Women, minorities, those with different abilities and veterans are encouraged to apply. For more information, visit [morainepark.edu/nondiscrimination](http://morainepark.edu/nondiscrimination).

Learn more about Moraine Park's plan, including details on each project, at [morainepark.edu/future](http://morainepark.edu/future).