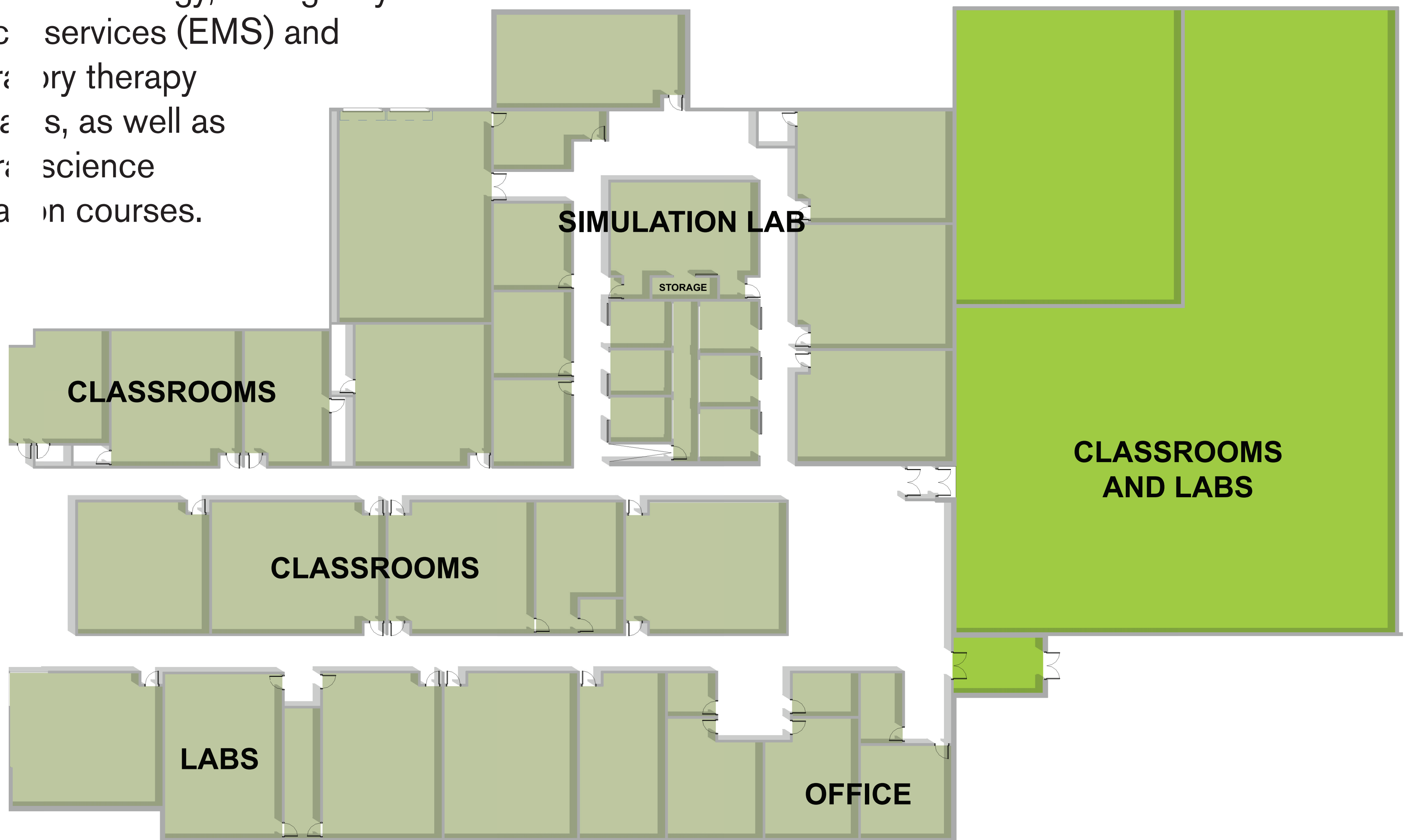


PROPOSED ENHANCEMENT PROJECT - FOND DU LAC COUNTY

HEALTH AND HUMAN SERVICES FACILITY

FOND DU LAC CAMPUS

The enhancement of Moraine Park's Health and Human Services wing on the Fond du Lac Campus will add simulation spaces that model real-world clinics and labs, and update labs and classrooms for nursing, radiography, medical lab technician, surgical technology, emergency medical services (EMS) and respiratory therapy programs, as well as general science education courses.



STUDENT IMPACT

The proposed enhancement will bring:

- New simulation spaces that will allow 128 new nurses district-wide to finish their credentials at MPTC annually.
- More advanced simulation training throughout many health programs offered at the Fond du Lac campus, allowing students to be better prepared to begin employment immediately after graduation.



COMMUNITY IMPACT



- 8,000 plus health care jobs are expected to open over the next 10 years. *Source: Quarterly Census of Employment and Wages*
- Expansion of the health and human services program facilities will position MPTC to better meet the current and future district workforce needs.

COSTS

Estimated project cost:

\$13.7 million*

Total referendum cost:

\$55 million

The projected tax impact of the \$55 million facilities enhancement plan is estimated to be \$21 per year per \$100,000 of property value (\$1.75 per month) for the next 20 years.

Moraine Park Technical College is an equal opportunity and affirmative action College. Women, minorities, those with different abilities and veterans are encouraged to apply. For more information, visit morainepark.edu/nondiscrimination.