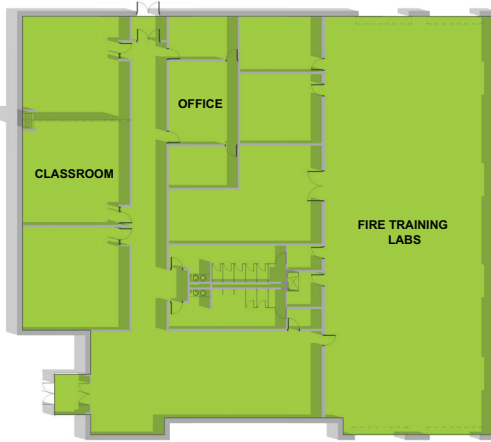


**PROPOSED NEW
CONSTRUCTION PROJECT**

FIRE TRAINING FACILITY

(LOCATION TBD)

The purchase of land and construction of a new fire training facility in the Moraine Park District will help meet the current demand for firefighters and paramedics at the 50-plus fire departments in the region.



THE NEED

Moraine Park's fire training facility, currently a burn trailer located at the Beaver Dam Campus, has been essential in training many emergency personnel over the last 25 years. As an aging facility, the training site requires updates. However, the location is landlocked, preventing expansion. The current system only has room for two training scenarios and one burn room. There is limited storage for equipment and training needs, and controlled burns pose wind and weather challenges because of the close proximity to Highway 151.

The new facility will provide training opportunities for protective service occupations such as fire and EMS/paramedics. Moraine Park leaders are working with educational partners and industry professionals to create a state-of-the-art training facility for future protective service professionals. The location is still being determined but will include a three-tier fire training building with two burn rooms. Additionally, the facility is proposed to have an external wall suitable for rope repelling, an internal elevator shaft, confined space, passage for rescue procedures, a pond for water rescue simulations and a rail car for train rescue simulations.

STUDENT IMPACT

The proposed new construction will bring:

- Facilities that will allow hands-on training include:
 - Live fire conditions
 - Burn with props
 - Controlled fire situations for a lower-risk training experience.



DISTRICT IMPACT

- The district is in need of highly trained firefighters.
- A centrally located facility will allow MPTC to provide training to the majority of our 50 community partners.
- A new centrally located center will provide the required training to ensure firefighters are ready to serve their communities.
- Allows student firefighters to train high-risk/low-frequency skills in the safety of a training environment.



MORAINÉ PARK TECHNICAL COLLEGE
**REFERENDUM
VOTE²⁰₂₂**
IMAGINE WHAT'S NEXT, TOGETHER.

PROJECT GOALS

- Purchase land and build a new fire training facility to meet the demand for firefighters and paramedics at the 50-plus fire departments in the region.
- Provide an advanced training space for the new Fire Protection Technician associate degree, starting fall 2023.
- Offer a centrally located facility with updated classrooms and live fire simulations to train both existing fire personnel from across the district and those seeking to pursue a degree from MPTC.
- Allow the Beaver Dam Campus to expand other classrooms and labs into the space occupied by the current fire training facility.

COST

Estimated project cost:

\$9.3 million*

Total referendum cost:

\$55 million

The projected tax impact of the \$55 million facilities enhancement plan is estimated to be \$21 per year per \$100,000 of property value (\$1.75 per month) for the next 20 years.

Other projects include:

- Advanced Manufacturing and Trades - Fond du Lac County | \$13.7 million
- Manufacturing, Automation and Robotics Lab - Washington County | \$18.5 million
- Health and Human Services Facility - Fond du Lac County | \$13.3 million



SCAN TO
LEARN MORE!

Moraine Park Technical College is an equal opportunity and affirmative action College. Women, minorities, those with different abilities and veterans are encouraged to apply. For more information, visit morainepark.edu/nondiscrimination.

Learn more about Moraine Park's plan, including details on each project, at morainepark.edu/future.