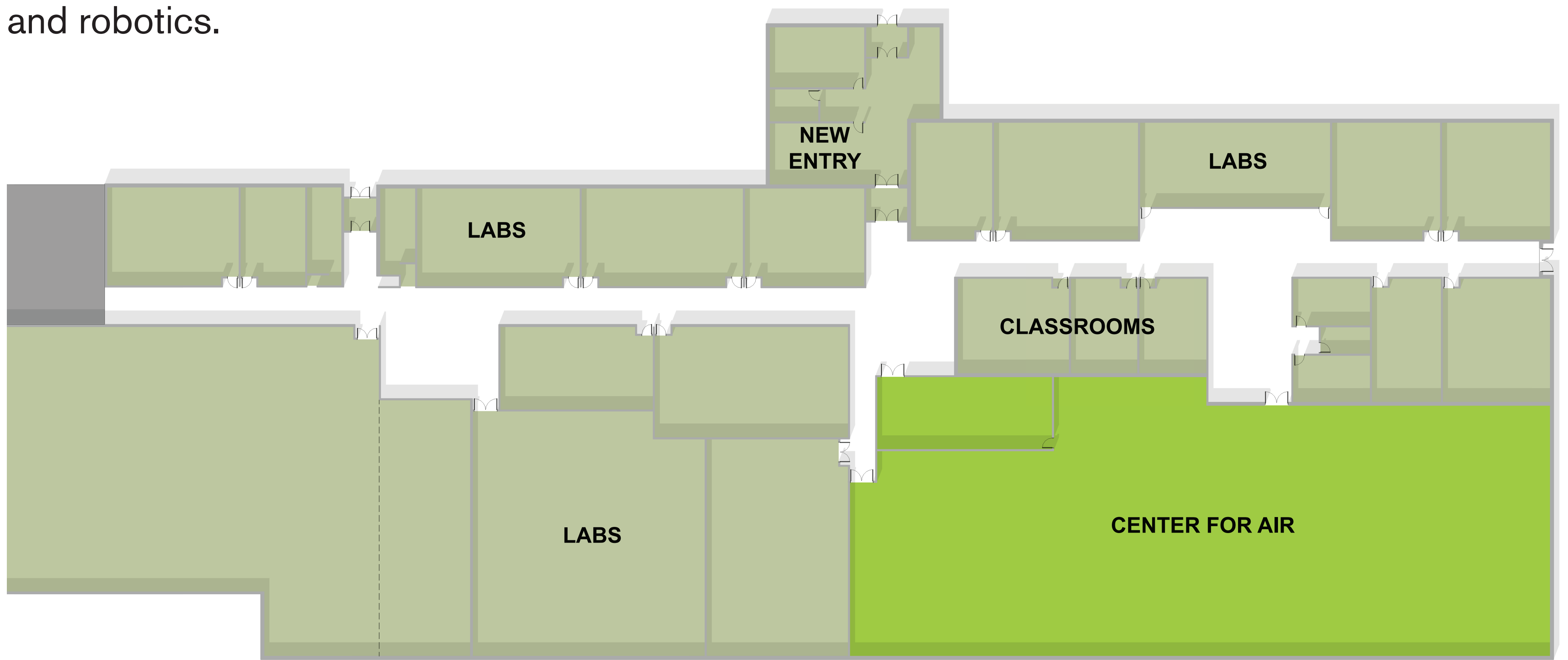


PROPOSED ENHANCEMENT PROJECT - FOND DU LAC COUNTY

# ADVANCED MANUFACTURING AND TRADES ENHANCEMENTS

## FOND DU LAC CAMPUS

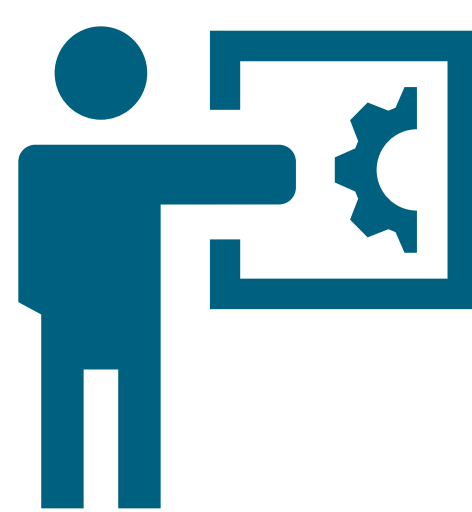
The enhancement of Moraine Park’s manufacturing and trades wing on the Fond du Lac Campus will create classrooms and specialized labs to address local workforce shortages and provide enhanced spaces for instruction in software training, programming, product design, manufacturing and robotics.



### STUDENT IMPACT

The proposed enhancement will bring:

- A larger learning space with more equipment that is reflective of industry standards and offers students a seamless transition from college to career.
- Increase opportunities for high school students to earn college credits at the 27 district high schools.



### COMMUNITY IMPACT

- There are expected to be more than 14,000 manufacturing jobs open over the next 10 years.  
*Source: Quarterly Census of Employment and Wages*
- 26% of jobs in the district are in manufacturing.  
*Source: Quarterly Census of Employment and Wages*
- 64% of students work within MPTC's district after graduation.  
*Source: WTCS Data Systems*



### COSTS

Estimated project cost:

**\$13.7 million\***

Total referendum cost:

**\$55 million**

*The projected tax impact of the \$55 million facilities enhancement plan is estimated to be \$21 per year per \$100,000 of property value (\$1.75 per month) for the next 20 years.*